



New and improved NexCalc!

Calculation program for heating cables and
heating cable mats.

Download the application or calculate in your browser.

- Based on your input, the program proposes a solution and choice of product(s) for several types of projects:
 - ◆ Floor heating
 - ◆ Snow and ice melting (area)
 - ◆ Snow and ice melting in stairs
 - ◆ Frost protection of gutters and drains
 - ◆ Frost protection of pipes
- The program supports series resistance and self limiting heating cables and mats

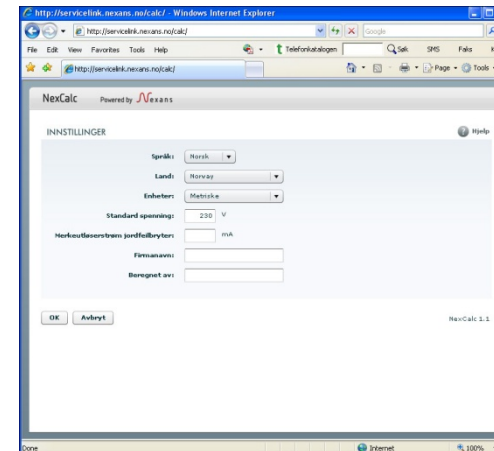
1. NexCalc online version

1. Open your browser
2. Go to the url-adress:
<http://servicelink.nexans.no/webcalc/>

2. NexCalc application

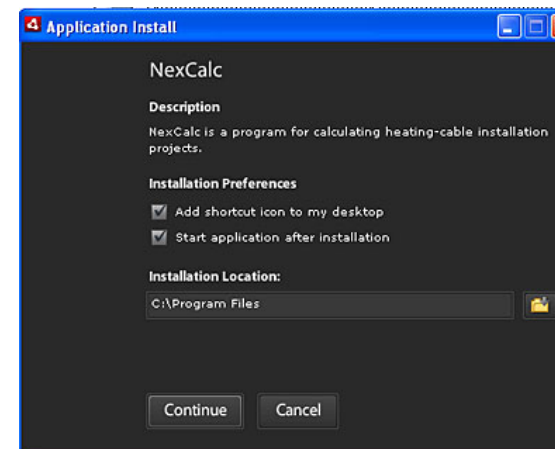
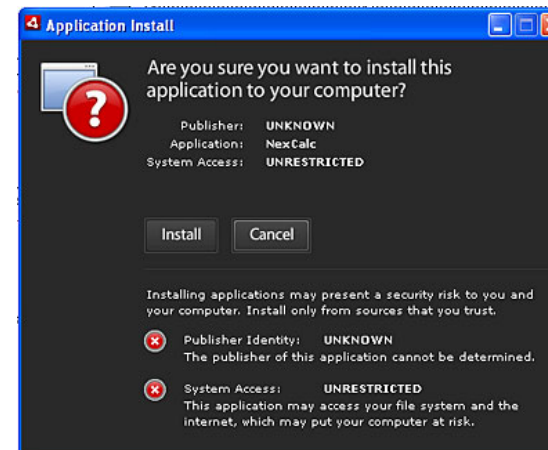
Download and install the application on your pc:

1. Go to the url-address:
<http://servicelink.nexans.no/desktop/>
2. Click the Nexans button "install now"
3. Adobe® AIR™ will be installed together with the NexCalc application

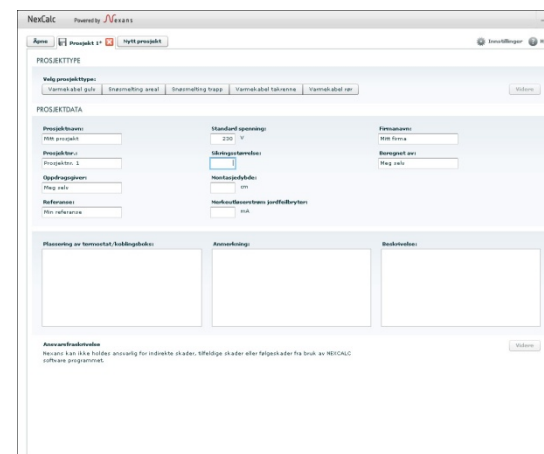
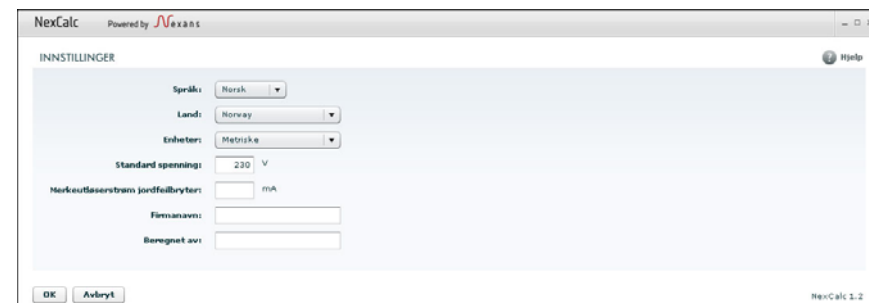


In order to run NexCalc, this installer will also setup Adobe® AIR™.

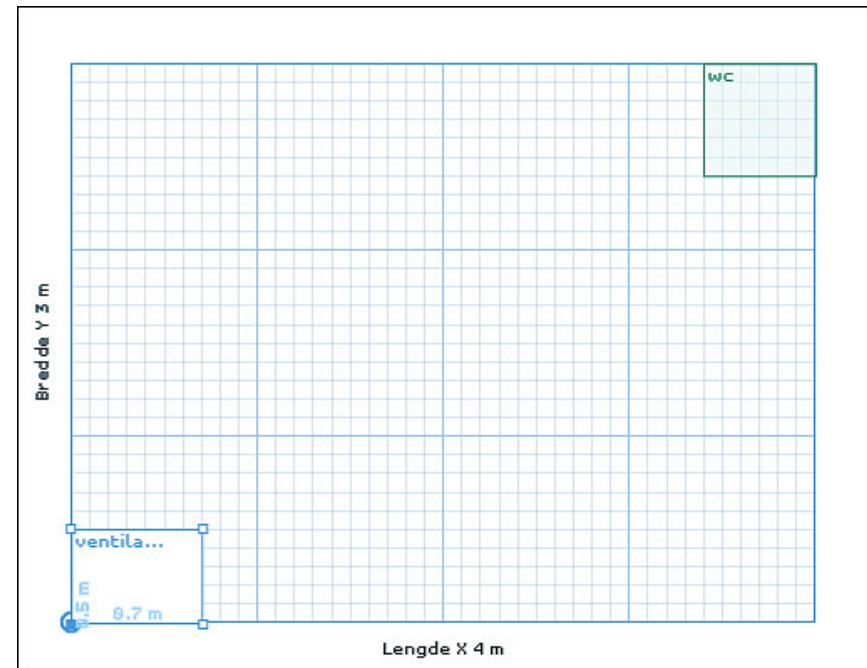
1. Click the button “open” when you’re asked whether you want to unlock or save the NexCalc.air file
2. Click the ”install” button to install the NexCalc application on your pc
3. Select or unselect
 1. Shortcut icon on your desktop
 2. Open NexCalc when installed



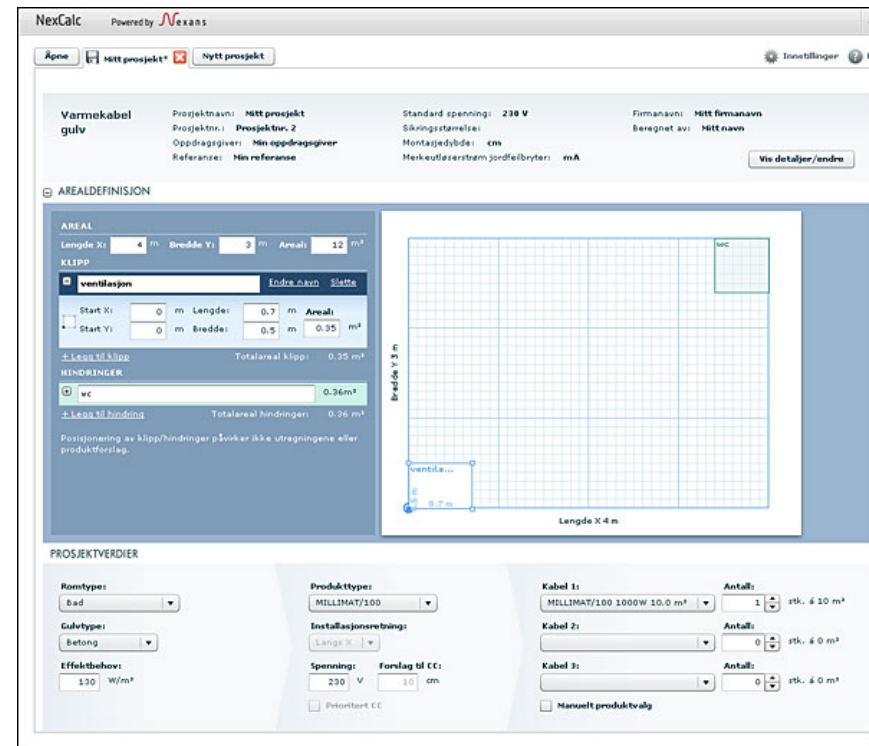
- Select the settings for the program:
 - ◆ Language, country, default voltage etc.
 - ◆ Company name and your name
- Select project type:
 - ◆ Floor heating.
 - ◆ Snow and ice melting (area).
 - ◆ Snow and ice melting in stairs.
 - ◆ Frost protection of gutters and drains.
 - ◆ Frost protection of pipes.
- Calculate and store one or more projects
 - ◆ To be able to save your project, you must run NexCalc locally on your pc.



- Area definitions:
 - ◆ Length and width
- Add cuts
 - ◆ Area(s) that's not a part of the room and shall not be heated
- Add obstacles
 - ◆ Area(s) that need heating, but heating cable shall not be installed here, (ea. below kitchen fixtures, permanent furniture.)



- Room type
 - ◆ Bath, WC, corridor etc.
- Floor type
 - ◆ Concrete, wood, thin floor etc.
- Product type
 - ◆ Heating cable elements
 - ◆ On drum heating cables
 - ◆ Heating cable mats
- Choose cable or mat product(s)
- Cable's direction
- Power demand
- Voltage



- If something went wrong with the installation, download the following source programs and install them manually before you install NexCalc:

1. Adobe Flashplayer

<http://get.adobe.com/flashplayer/>

2. Adobe Air

<http://get.adobe.com/air/>

